

OKLAHOMA DEPARTMENT OF TRANSPORTATION					
FED. ROAD DIST. NO.	STATE	PROJ. NO.	FISCAL YEAR	SHEET NO.	TOTAL SHEETS
6	OKLA.				
DESCRIPTION		REVISIONS		DATE	

C-16-1114, N4 CORNER OF SECTION 13, T1S, R12W, I.M., COMANCHE COUNTY, OK. SET MAG NAIL HALF WAY AND ON LINE FROM CORNERS 0.5 MILES EAST AND WEST OF THIS LOCATION. FILED NEW CCR FOR THIS CORNER.

C-16-1113, NWCORNER OF SECTION 13, T1S, R12W, I.M., COMANCHE COUNTY, OK. FOUND MAG NAIL IN PLACE PER CCR FILED BY PLS 1285. USED THIS CORNER AND FILED NEW CCR.

C-16-1099, NWCORNER OF SECTION 13, 1S, R12W, I.M., COMANCHE COUNTY, OK. FOUND #4 REBAR PER CCR* S FILED BY PLS 1285 AND 1522. THIS CORNER FITS SURVEYS PERFORMED IN SECTION 18. USED THIS CORNER LOCATION AND FILED NEW CCR.

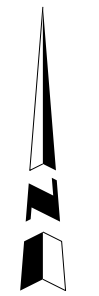
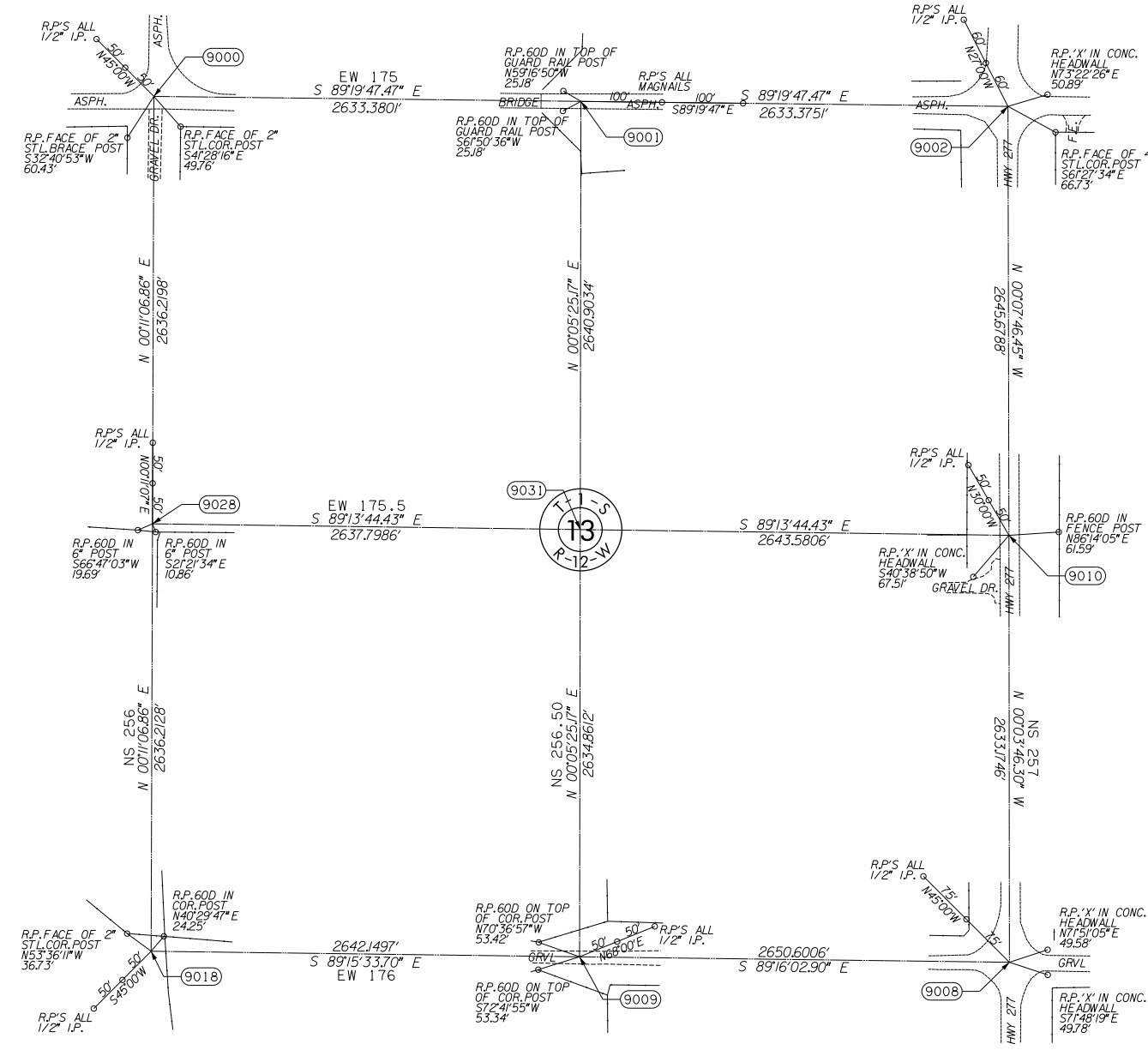
C-16-1112, W4 CORNER OF SECTION 13, T1S, R12W, I.M., COMANCHE COUNTY, OK. SET #4 REBAR AND PLS 1071 CAP HALF WAY AND ON LINE FROM CORNERS 0.5 MILES NORTH AND SOUTH OF THIS LOCATION. FILED NEW CCR FOR THIS CORNER.

C-16-1098, E4 CORNER OF SECTION 13, T1S, R12W, I.M., COMANCHE COUNTY, OK. FOUND #4 REBAR 6 INCHES DEEP PER CCR FILED BY PLS 1285. THIS CORNER FITS SURVEYS PERFORMED IN SECTION 18 BY PLS 1285 AND 1522. USED THIS CORNER LOCATION AND FILED NEW CCR.

C-16-1111, SWCORNER OF SECTION 13, T1S, R12W, I.M., COMANCHE COUNTY, OK. FOUND ONE INCH PIPE WITH #4 REBAR AND PLS 1285 CAP INSIDE. USED THIS CORNER AND FILED NEW CCR.

C-16-1097, SECORNER OF SECTION 13, T1S, R12W, I.M., COMANCHE COUNTY, OK. FOUND MAG NAIL IN PLACE PER CCR FILED BY PLS 1522. USED THIS CORNER LOCATION AND FILED NEW CCR.

C-16-1115, S4 CORNER OF SECTION 13, T1S, R12W, I.M., COMANCHE COUNTY, OK. FOUND #4 REBAR 12 INCHES DEEP IN PLACE PER CCR FILED BY PLS 1285. SET #6 REBAR ON TOP AND FILED NEW CCR.



SCALE:
1" = 500'

OKLAHOMA DEPARTMENT OF TRANSPORTATION			
SURVEY DIVISION			
SURVEY DATA SHEET			
PLS	JLC		
DRAWN	BJG		
CHECKED	JLC		
APPROVED	JLC		
CREW	CARROLL	SWO 4752(1)	STATE JOB NO. 27968(04) SHEET NO. S008